



2023 GCOA Course of the Year

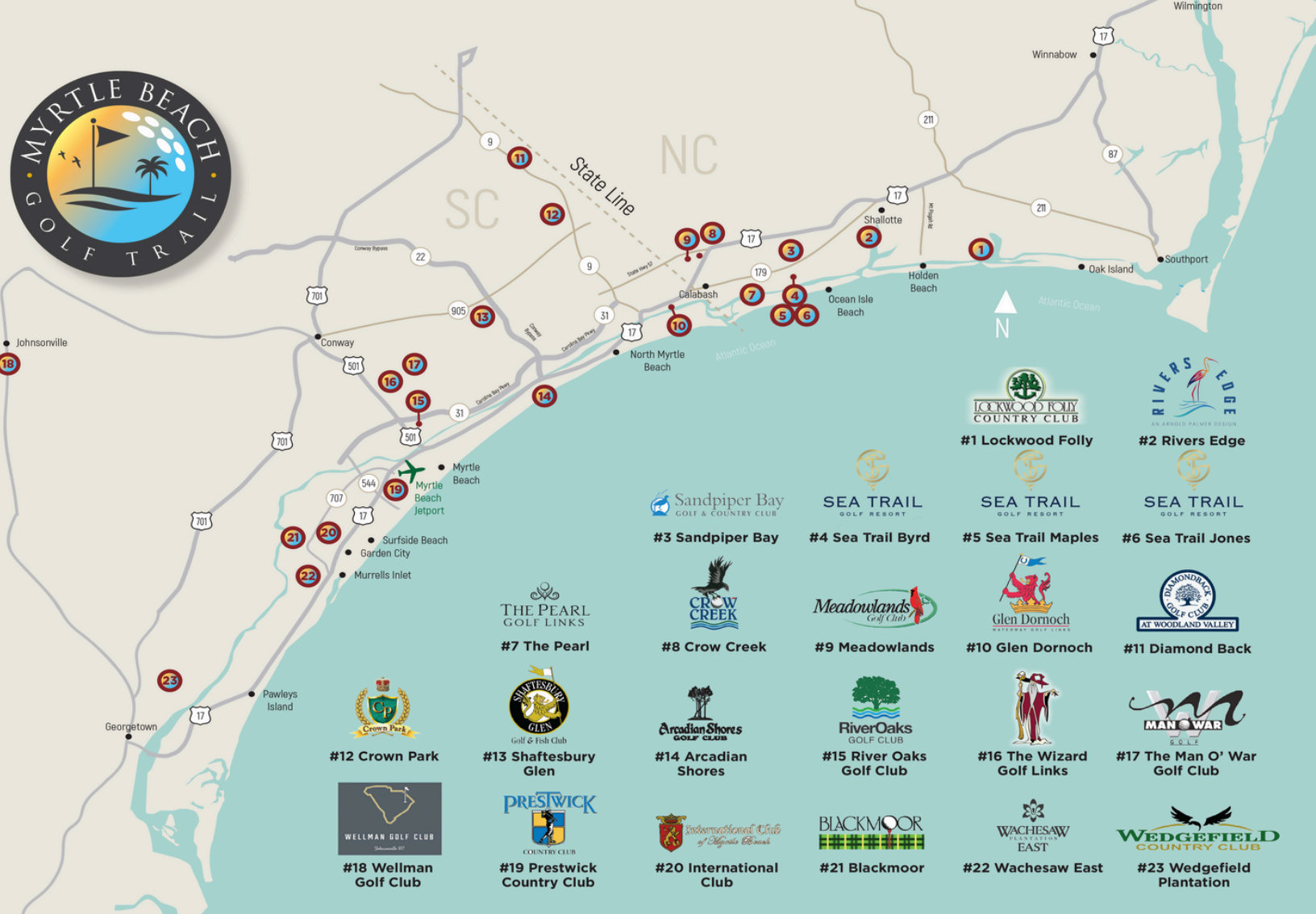


Table Of CONTENTS

DISCOVER COURSES	03-34	CLUBHOUSE FEVER	35-37
CRITTER ENCOUNTERS	07	BOARDWALK BILLIES	38-39
CLUBHOUSE FLAVOR	10		
FAMILY GOLF WEEK	14		
GREG NORMAN	22-23		
THOROUGHBREDS CHOPHOUSE	29-30		



Arcadian Shores Golf Club is a premier destination, known for its uniquely contoured fairways, greens and an abundance of live oaks and well-placed lakes. This combination gives the course a personality all its own that is a favorite of locals and visitors seeking a memorable round.

Conveniently located in the heart of Myrtle Beach, South Carolina, Arcadian Shores is not far from the beaches, shopping, and luxury hotels. Designed by renowned architect Rees Jones and opened in 1974, Arcadian Shores features Sunday Bermuda grass greens, known for their smooth and consistent roll. Golfers can expect true and reliable putting surfaces throughout their round, making for an enjoyable and rewarding experience on the greens.

The signature hole at Arcadian Shores is the breathtaking Hole 13, a par 4 that will test your skills and nerve. This hole features a downhill second shot over water to a shallow green. It's a visually stunning hole that demands accuracy and precision, offering a thrilling challenge for golfers of all levels.

Under the leadership of General Manager Frank Coughlin, Arcadian Shores is committed to providing exceptional service and a memorable golfing experience. Superintendent Eric Covelli ensures that the course is meticulously maintained to the highest standards, ensuring pristine conditions for every round.

After your round, satisfy your hunger at the snack bar. While there isn't a full restaurant or sports bar on-site, the snack bar offers a variety of delicious options to refuel and relax after your game. Grab a quick bite and enjoy the camaraderie of fellow golfers as you recount the highlights of your round. Whether you're a seasoned golfer or a beginner, Arcadian Shores Golf Club offers a challenging and enjoyable golfing experience. Book your tee time today and discover the beauty, challenge, and exceptional service that await you at this remarkable course along the Myrtle Beach Golf Trail.



Myrtle Beach, South Carolina

ARCADIAN SHORES GOLF CLUB



Myrtle Beach, South Carolina

BLACKMOOR GOLF CLUB

Located in the charming town of Murrells Inlet, South Carolina, Blackmoor Golf Club offers golf enthusiasts a hidden gem that combines the natural beauty of the Lowcountry with a touch of history.

Designed by the legendary Gary Player, nicknamed the Black Knight, thus giving Blackmoor its name. Opened in 1990, this meticulously crafted course has become a long-time favorite among golfers visiting the Myrtle Beach area.

The Player design incorporates the Lowcountry's splendor and pays homage to the region's rich history. The course spans a maximum of 6,614 yards, ensuring that golfers of all skill levels are challenged. This is not a "grip-it-and-rip-it" style course; instead, it rewards strategic shot placement and careful club selection. The Signature 8th Hole is one of the most memorable on the Myrtle Beach Golf Trail. A par-4 dogleg right, bordered by trees, challenges long drivers to take a tree lined alleyway shortcut to drive the green to record an historic eagle.

Under the guidance of General Manager Bob Zuercher, Jason Mitchell, and Superintendent Andy Traynham, Blackmoor Golf Club ensures exceptional course conditions and a memorable experience for all visitors.

After an exhilarating round of golf, golfers can unwind at the Blackmoor Grill, where a full menu of delicious sandwiches, refreshing alcoholic beverages, and more await. Whether you're seeking a quick bite or a leisurely meal, the Grill provides a comfortable atmosphere to relax and relish in the camaraderie of fellow golfers. Blackmoor lures seasoned players and beginners. It is a hidden gem and a must-visit destination for golf enthusiasts seeking a unique blend of history, natural beauty, and golfing excellence. Discover the magic of Blackmoor Golf Club in Murrells Inlet.

Holden Beach, NC

LOCKWOOD FOLLY COUNTRY CLUB

Players of Lockwood Folly Country Club leave with an incredible memory of tree-lined fairways with massive oaks, stately pines, quiet ponds and abundant wildlife. The 18 hole, par 72 Willard Byrd designed course measures 6836 yards from the tips and has a rating of 73.9 with a slope of 140. The front tees provide a distance of 5029 yards for a rating of 71.1 with a slope of 122.



Longs, SC

CROWN PARK GOLF CLUB

Located just minutes from North Myrtle Beach on Highway 9, Crown Park Golf Club winds through a Carolina Pine forest, allowing for a peaceful round with none of the neighborhood distractions.

Crown Park Golf Club is a shot makers course. Each hole will test your ability without stretching distance to the limit. While remaining, very friendly to all ages and skill sets.

 6,502

Crow Creek Golf Club

Not far from the charming fishing village of Calabash, North Carolina, Crow Creek Golf Club is a must-visit destination. Designed by renowned architect Rick Robbins in 2000, this 18-hole public course has earned a reputation for its immaculate maintenance and challenging yet enjoyable layout. With its tifsport Bermuda fairways, V8 bent grass greens (one of the few in the region), and a dedicated team led by General Manager Joe Jamison, Director of Golf Mike Benson, and Head Golf Pro Tyler Robinette, Crow Creek Golf Club offers a golfing experience like no other.

Crow Creek Golf Club takes pride in its commitment to impeccable course maintenance. The tifsport Bermuda fairways provide golfers with a lush and visually appealing playing surface, while the V8 bent grass ensures a smooth, consistent, and challenging putting experience on some quick, undulating greens. Superintendent Harry Robshaw and his team work tirelessly to ensure that every aspect of the course is in pristine condition, creating an exceptional golfing experience for players of all skill levels.

The layout of Crow Creek Golf Club offers a perfect balance of challenge and enjoyment. As golfers navigate their way through the course, they will encounter a variety of strategically placed hazards, undulating fairways, and well-guarded greens. This thoughtful design ensures that players are tested on every shot, while still providing an enjoyable round of golf. Whether you're a seasoned golfer looking for a challenge or a beginner seeking a memorable experience, Crow Creek Golf Club caters to all skill levels.

After the round, golfers can refuel and relax at the Crow Creek Golf Club's snack bar and restaurant. Offering a range of delicious options, the snack bar provides quick bites and refreshments to keep golfers energized throughout their game. For those seeking a more leisurely dining experience, the restaurant offers a delightful menu, allowing golfers to savor a satisfying meal while enjoying the picturesque views of the course.





SANDPIPER BAY



ARCADIAN SHORES



LOCKWOOD FOLLY

A series of special creatures you may meet along the way

CROCS, BIRDS, OH MY



SEA TRAIL

CROWN PARK



Myrtle Beach, SC

GLEN DORNOCH WATERWAY GOLF LINKS

Glen Dornoch, a masterful design tribute to legendary golf course designer Donald Ross, is a course that will earn your respect and admiration. A fairly tame introduction on holes one through four makes for a gracious warm-up to what have been referred to as some of the toughest finishing holes in Myrtle Beach golf.

Whether it's a 3-wood, 5-wood or a hybrid club you reach for, just remember — at Glen Dornoch, positioning off the tee is key. Shoot for accuracy, not distance, and you will put yourself in a position to score well.



Loris, SC

DIAMONDBACK GOLF CLUB

This Russell Breeden designed course is set in the low-country woodlands just outside of North Myrtle Beach, South Carolina. Measuring 6928 yards from the back teeing ground, Diamondback is playable and enjoyable for golfers of all abilities.

Even more enticing than the golf course is the way you will be treated from the moment you arrive at the property. A staff led by Aynor's own Patrick Wilkinson, one of the Grand Strand's most highly regarded golf professionals, will make you feel welcome and wanted throughout your time at Diamondback Golf Club.

 6,928



Diamondback Golf Club at Woodland Valley is "down-home" hospitality and great golf. It's perfect for a group golf outing.

Diamondback Golf Club is nestled in the picturesque low-country woodlands just outside of North Myrtle Beach.

With a total length of 6,928 yards from the back tees, this course offers enjoyable play for golfers of all skill levels.

When you step onto our course, you'll experience the true essence of Russell Breeden's design. Diamondback Golf Club is not just a place to play golf; it's an experience that combines the beauty of the tranquil woodlands while enjoying a round that could challenge your game. Take advantage of our well-maintained fairways, pristine greens, and stunning scenery as you navigate through the course. Besides Southern charm, Diamondback is known for reasonable rates.

However, what sets Diamondback Golf Club apart is the exceptional treatment you'll receive from the moment you arrive. Our staff, led by the highly regarded golf professional Patrick Wilkinson will ensure that you feel welcome and valued throughout your time here. From providing expert advice to creating a warm and inviting atmosphere, we strive to exceed your expectations. When you get there, have some fun and ask Patrick about the Diamondback snakes. Hint: there's only one and it is in a glass box at the front desk.

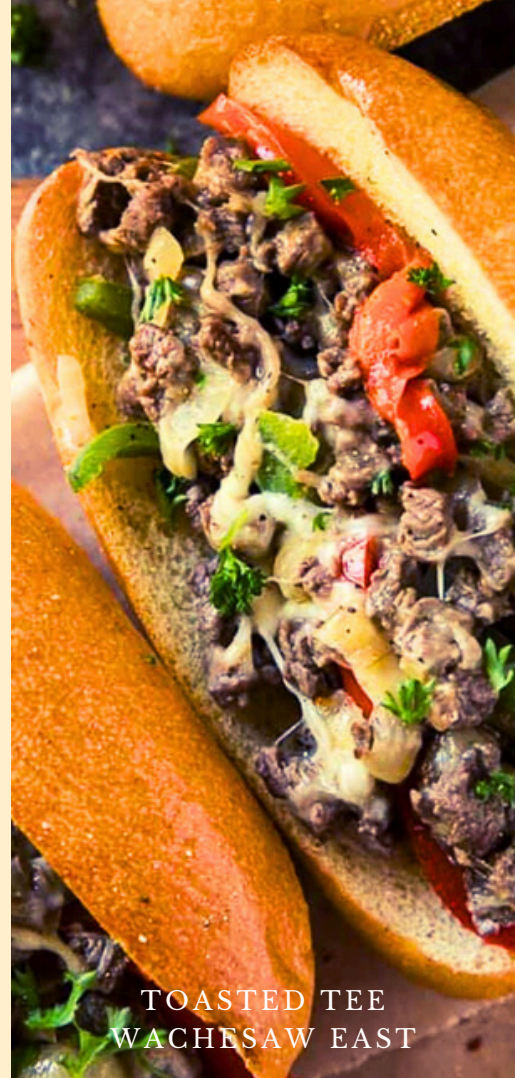
Diamondback is the only golf course on Highway 9 in Horry County, South Carolina that is proudly American owned and operated.



OAK AND ANCHOR -
LOCKWOOD FOLLY



THE PEARL
BAR AND GRILL



TOASTED TEE
WACHESAW EAST

CLUBHOUSE FLAVOR

DINE LIKE ROYALTY

The Myrtle Beach Golf Trail satisfies more than the golfer's swing. Take your taste buds a step further after a successful day on the greens with the various bars and grills featured throughout our partner clubhouses.

Myrtle Beach, South Carolina, a renowned foodie capitol, knows a thing or two about entrée madness. Whether it's a local seafood restaurant with the ocean in sight or a buffet fit for kings, you'll find a world worth of food tucked inside the coastal town of Myrtle Beach.

As one can imagine, many of the golf courses found on the Myrtle Beach Golf Trail hold tight to such a reputation, offering bars and grills alike. In the whim of southern hospitality, any golfer would surely be swooned after a hearty day on the course to find warm food and kind company.

INTERNATIONAL CLUB

Located in Murrels Inlet, south of Myrtle Beach, South Carolina, the International Club offers golfers an unforgettable experience and a world geography lesson. Designed by renowned architect William Byrd and opened in 2000, this course showcases Byrd's commitment to creating a challenging yet enjoyable layout. With its dedicated team led by General Manager Rob Mosser, Head Pro Jonathan Brock, and Superintendent Jim Knaffle, the International Club provides the perfect blend of exceptional golf and warm hospitality.

Prepare to be captivated by the beauty of the International Club's signature hole, Hole 11. This par 3 is a true gem that will leave a lasting impression. From the slightly elevated tee box, golfers are treated to a panoramic view of the hole, stretching up to 180 yards from the back tee. The green is surrounded by water, adding both beauty and challenge to the hole. With its picturesque setting and strategic design, Hole 11 is a par 3 that will stay with you long after your round is over.

One of the highlights of the International Club is its Sunday Bermuda greens. Known for their exceptional playability and consistent roll, these greens provide the perfect surface for golfers to showcase their skills. Whether you're a seasoned pro or a beginner, the well-maintained greens at the International Club will reward accurate putting and test your ability to read the subtle breaks.

Under the watchful eye of Superintendent Jim Knaffle and his team, the course's greens are kept in impeccable condition, ensuring a memorable golfing experience. In addition, each hole represents a different nation such as England, Mexico, Austria, Israel, Germany, and more.



The International Club boasts a spacious clubhouse with a distinctly European-inspired design. With its 6,400 square feet of space, the clubhouse offers a welcoming atmosphere and serves as the perfect starting point for your golfing adventure. Practice your short game on the large putting green, or browse the fully stocked Golf Shop for all your golfing needs. Additionally, the International Club offers a full menu and bar, providing golfers with a delightful dining experience.





PRESTWICK COUNTRY CLUB

Situated in the heart of Myrtle Beach, not far from Myrtle Beach International Airport, Prestwick Country Club is another gem that offers golfers a truly exceptional experience. Designed by renowned architects Pete and PB Dye and opened in 1988, this 18-hole course showcases the Dye's signature style and attention to detail. With its challenging layout, stunning TifEagle Bermuda greens, and a dedicated team led by General Manager Jay Smith, Head Pro Jason Corneau, and Superintendent Paul Kaufman, Prestwick Country Club is a must-visit destination for golf enthusiasts.

Its whispering creeks and small lakes serve as natural water hazards throughout the course, adding both beauty and challenge to the playing experience. Man-made mounds and strategically placed bunkers further test golfers' skills, making each shot a true test of precision. Prestwick also offers some hints of some great courses like its Scottish namesake not far from Glasgow. Its deep bulkhead greens provide a unique challenge, reminiscent of Pinehurst No. 2. While its signature Hole #9, with its lakeside run on the left of the fairway, resembles Sawgrass' closing 18th hole, this par 5 is just as daunting. It plays 537 yards from the back tee and 486 yards from the regular white tee, demanding strategic shot placement and careful club selection.



Long hitters can attempt to reach the well-protected green in two shots, potentially setting up an eagle opportunity. However, any misstep can lead to a struggle to make par. Most players opt to lay up on their second shot, aiming for a nice third shot that gives them a chance for birdie or, at worst, a par. Hole #9 is a true test of skill and decision-making, making it a hole to approach with caution.

Prestwick Country Club boasts a spacious 20,000 square foot clubhouse that serves as the perfect retreat after a thrilling round of golf. The clubhouse features a restaurant where lunch is served daily from 11AM to 4PM. Whether you're looking for a quick bite or a leisurely meal, the restaurant offers a delightful menu to satisfy every golfer's cravings. Additionally, the banquet room is available for rent, accommodating meetings, parties, weddings, and other special events. With its picturesque views and elegant ambiance, Prestwick Country Club provides the perfect setting for any occasion.



FAMILY GOLF WEEK

2025 JULY
17-19



SCAN ME

JOIN US FOR THE 28TH ANNUAL FAMILY GOLF WEEK!

LARGEST FATHER SON TOURNAMENT IN THE WORLD!



NEW FAMILY DIVISION THIS YEAR!

Open to any two person pairing of family members, no generational gap needed!



ABSURD VALUE

Three rounds of golf, food, drinks, and a HUGE gift bag.



FAMILY BONDING

A few days on the links with your family can create lasting memories.



GREAT COURSES

Featuring premier golf courses, many of which named in the Top 100 in America.

REGISTER AT: **FamilyGolfWeek.com**

RIVER OAKS GOLF CLUB

Myrtle Beach, SC

River Oaks Golf Club has been carved from 800 pristine acres stretching along the Atlantic Intracoastal Waterway. The unique 18 hole design provides the ideal experience for visiting and local golfers. Designed by Gene Hamm and Tom Jackson, both nines were intended to challenge golfers of all skill levels. Each were named for animals found in their natural habitats when the course was developed – Fox and Otter.



MEADOWLANDS GOLF CLUB

Myrtle Beach, SC

Meadowlands features a number of unforgettable holes bordered by serene meadows, mature hardwoods and vast wetlands. The course's 7,054 yards are artfully sculpted around pristine freshwater lakes and natural vegetation.

Five sets of tees, an open layout, well-defined hazards and exemplary attention to create a rewarding round for everyone. Named one of the "Top Ten Best New Courses" by *North Carolina Magazine* when it opened, Meadowlands Golf Club also earned a spot on *Golf For Women's* Top 100 Women-Friendly Courses.

 7,054

Rivers Edge Golf Club



Huddled along the picturesque Shallotte River, Rivers Edge Golf Club stands as a testament to the genius of legendary golfer and architect Arnold Palmer. Opened in 1999, this iconic course has become a must-play destination for golf enthusiasts visiting Myrtle Beach. With its breathtaking views, challenging layout, and a dedicated team led by General Manager Jason Monahan, Head Golf Pro Dan Miller, and Superintendent Brad Manring, Rivers Edge Golf Club offers an unforgettable golfing experience.

Prepare to test your skills and mindset on Rivers Edge Golf Club's signature hole, Arnie's Revenge. This par 5 is the one you'll be talking about long after your round is over. Stretching out before you, this risk-reward hole offers a challenge that will push even the best players to their limits. With strategic water hazards, well-placed bunkers, and an undulating, narrow green, Arnie's Revenge demands careful shot selection and precise execution. Whether you choose to go for the green in two or layup, this hole will leave you with memories that last a lifetime. One of the highlights of Rivers Edge Golf Club is its Sunday Ultra-dwarf greens. Known for their exceptional smoothness and consistency, these greens provide an ideal putting surface for golfers of all skill levels. Whether you're a seasoned pro or a beginner, the greens at Rivers Edge Golf Club will reward accurate putting and test your ability to read the subtle breaks.

The immaculate condition of the greens, thanks to the meticulous care of Superintendent Brad Manring and his team, ensures an exceptional golfing experience.

After a rewarding round of golf, indulge in a culinary experience at the Double Eagle Grille. Whether you're looking for a quick bite at the snack bar or a relaxing afternoon with a full menu on the porch overlooking the Shallotte River, Double Eagle Grille has something for everyone. Enjoy a refreshing beverage and a delicious sandwich at the turn, or savor a mouthwatering meal while taking in the breathtaking views. With its inviting ambiance and delectable offerings, Double Eagle Grille provides the perfect setting to unwind and relish in the joys of a memorable day on the course while looking out over Holes 9 and 18.





Sandpiper Bay Golf & Country Club is a player-friendly public golf course located in picturesque Sunset Beach, NC offering a delightful golfing experience amidst the serene beauty of North Carolina's pine-lined fairways. Designed by renowned architect Dan Maples, Sandpiper Bay features 27 holes of championship golf. The original 18 holes, known as the Sand and Piper nines, opened in 1987. These well-established nines are complemented by the Bay nine, which was added in 2000, also designed by Maples.

With a rich history and a reputation for providing an enjoyable round, Sandpiper Bay is a favorite among locals and visitors alike. The greens at Sandpiper Bay are meticulously maintained and feature Mini Verde Bermuda and Sunday Bermuda grasses. These greens provide a smooth and consistent playing surface, ensuring a rewarding and enjoyable putting experience for golfers of all skill levels. The signature hole at Sandpiper Bay is Bay #7, a picturesque par 4 that will test your strategic shot making skills. From an elevated tee box, golfers must navigate their tee shot over a narrow water hazard to a landing area with water on the right and woods on the left. Surprisingly, you only need to hit it 220 yards to reach the 100-yard plate, setting up a short pitch to an angled green surrounded by water. It's a beautiful hole that offers both a birdie chance and a potential double bogey, providing an exciting challenge for golfers.

Sandpiper Bay Golf & Country Club prides itself on providing a complete golfing experience. The facility offers a comprehensive practice area with a putting green, driving range, and chipping green, allowing golfers to fine-tune their skills before heading out on the course.

After your round, relax and unwind at Piper's Bar & Grill in the clubhouse, where you can enjoy delicious food and refreshing beverages while taking in scenic views of the golf course.

Under the leadership of General Manager Tim Tilma, Head Pro Richard Kascsak, and Superintendent Jon Stewart, Sandpiper Bay maintains a high standard of course conditions and exceptional customer service. The staff is dedicated to ensuring every golfer has a memorable experience on and off the course.

Sandpiper Bay Golf & Country Club offers memberships for both locals and non-residents, making it a fantastic option for avid golfers. Additionally, the course is open year-round for public play, allowing visitors to experience the beauty and challenge of Sandpiper Bay at any time.

Discover the beauty and charm of Sandpiper Bay Golf & Country Club on the Myrtle Beach Golf Trail.

Book your tee time today and prepare for a memorable golfing experience that combines scenic views, exceptional course conditions, and the opportunity to create lasting memories on the signature hole.

Sunset Beach, North Carolina

SANDPIPER BAY GOLF & COUNTRY CLUB

TRAIL GUIDE

MAN O'WAR GOLF

Myrtle Beach, South Carolina.



Man O' War Golf Course in Myrtle Beach offers a legendary golfing experience thanks to the design of architect Dan Maples. This par-72 masterpiece is a must-play for golf enthusiasts of all skill levels.

Situated about 10 miles from the coast, Man O' War takes full advantage of the majestic scenery in the area. The course features Crenshaw Bent grass on the greens and 419 Bermuda grass on the fairways, providing a lush and inviting playing surface.

The highlight of this course is the 100-acre lake that defines almost all of the eighteen holes, making it a dominant factor in the course's layout. You'll find the lake visible from every hole, and it comes into play on no less than a dozen holes, presenting a challenge that will test your skills.

Measuring approximately 7,000 yards from the black tees, Man O' War offers a unique golfing experience with a significant amount of water to navigate. Laying up is often the smart play, as the water hazards strategically placed throughout the course require careful shot selection. This course is designed to challenge golfers of all abilities, offering excitement and intrigue at every turn.

As you make your way around the course, you'll appreciate the meticulously maintained fairways, well-manicured greens, and stunning views of the surrounding landscape. The lush greenery and relatively flat terrain make Man O' War a true representation of a typical Myrtle Beach golf course, and that's a compliment in itself. Whether you're a local golfer or visiting the area, this course is sure to impress with its remarkable layout and captivating scenery.

After your round, make sure to visit the Man O' War Clubhouse, where you can relax, unwind, and share stories of your golfing triumphs. Since its opening in 1995, Man O' War has been a favorite among both local golfers and those visiting on Myrtle Beach golf packages.



Its unique design and scenic beauty have earned it a four-star rating, solidifying its reputation as one of the top golf courses in the area.

Experience the thrill of playing on a course that embraces the natural landscape and challenges your skills at every hole. Book your tee time at Man O' War Golf Course and prepare for an unforgettable golfing adventure in Myrtle Beach.



TRAIL GUIDE

THE WIZARD GOLF

Myrtle Beach, South Carolina.



The Wizard Golf Course in Myrtle Beach will transport you to the Scottish Highlands. Designed by the renowned architect Dan Maples, The Wizard is a low-country track that combines elements of links courses found in Scotland with the natural terrain of the woodlands and wetlands.

This unique blend of characteristics has earned The Wizard a well-deserved 4-Star rating from Golf Digest Magazine. As you make your way around the course, you'll appreciate the strategic design that offers both fun and challenge for golfers of all skill levels. Maples' inspiration from the Scottish Highlands is evident in the course's layout, providing a truly immersive experience for golfers seeking something different.

Located in close proximity to the Myrtle Beach International Airport and other popular area attractions, such as the Myrtle Beach Boardwalk and Barefoot Landing, The Wizard offers convenience and accessibility to visitors. Whether you're a local golfer or visiting the area, this course is a must-play for anyone looking for a unique and memorable golfing experience.

The Wizard offers a variety of tee options, ranging from 5,000 to 6,700 yards in length. Precision and patience are key on this course, as there are numerous holes where water hazards and bunkers are strategically placed, often hidden from the tee. To navigate the course successfully, it's recommended to use GPS or take the time to learn the layout through experience.

After your round, make sure to visit The Wizard Clubhouse, where you can relax and unwind while enjoying the company of fellow golfers. The clubhouse provides a welcoming and friendly atmosphere, perfect for sharing stories and creating lasting memories.

Experience The Wizard Golf Course and discover why it stands out among the many great courses in the Myrtle Beach area.



THE SEA TRAIL

MAPLES GOLF COURSE

6,374 yards



The Sea Trail Maples Golf Course is a stunning and challenging course designed by Dan Maples that opened in 1986. This traditional southern track is nestled among ancient oaks and Carolina pines, offering a picturesque setting.

The Maples Course is known for its medium-length layout that demands accuracy and precision. As you navigate the course, you will enjoy the five holes that wind along the scenic Calabash Creek, providing breathtaking views and a serene atmosphere. The landscaping on this course is truly elaborate, enhancing the natural beauty of the surroundings.

One of the highlights of the Maples Course is its undulating greens. These A1/A4 blended Bent grass greens add an extra layer of challenge to your game, requiring skillful putting and careful reading of the greens. The greens are meticulously maintained by Superintendent Jesse Rushton, ensuring a top-notch playing experience. Throughout the course, you will encounter numerous waste bunkers strategically placed to test your shot-making abilities. One notable bunker extends the full length of the 15th fairway, adding an element of risk and reward to your game. These bunkers, combined with the course's layout, make for a truly engaging round of golf. Sea Trail Maples Golf Course is perfect for a seasoned golfer or a beginner. The Par-72 layout offers a variety of tee options to accommodate golfers of all skill levels. From the blue tees, the course measures 6,374 yards, providing a challenge for experienced players. The white tees offer a slightly shorter distance of 5,899 yards, while the gold tees measure 5,514 yards. For those seeking a more relaxed round, the red tees offer a distance of 4,771 yards.

When you visit the Sea Trail Maples Golf Course, expect a well-maintained course, stunning scenery, and a challenging yet enjoyable round of golf thanks to Head Golf Pro Doug Donner and his team.

THE SEA TRAIL

BYRD GOLF COURSE

6,649 yards



The Sea Trail Byrd Golf Course offers a distinctively different approach to golf, demanding strategic thinking and precise shots to navigate its obstacles. This unique and challenging course was designed by Willard Byrd and opened in 1990.

You will notice the Byrd Course is characterized by a constricting tree line, which adds an element of challenge to your game. As you make your way through the course, you will encounter greenside bunkers that require careful consideration and skillful shot placement. Additionally, the course features lakes ranging from 14 to 20 acres in size, further testing your accuracy and decision making. To excel on the Byrd Course, strategically placed tee shots are essential. Precision and planning are required when hitting from the fairways onto Byrd#39s undulating greens, which are made of Champions Bermuda grass. These greens present a unique challenge, demanding a delicate touch and accurate reading of the breaks.

The Byrd Course offers a picturesque and scenic experience, with the 18th hole serving as a stunning finale. This Par-5 is not long but you need to hit your target. The hole is situated between two beautiful ponds, providing a memorable backdrop as you conclude your round. The Jones Byrd Clubhouse, located near the 18th hole, offers a perfect spot to relax and reflect on your game. No matter your skill level, the Byrd Course provides a variety of tee options to suit your needs. From the blue tees, the course measures 6,649 yards, offering a challenge for experienced golfers. The white tees provide a slightly shorter distance of 6,142 yards, while the gold tees measure 5,504 yards.

For those seeking a more manageable round, the red tees offer a distance of 4,510 yards. When you visit the Sea Trail Byrd Golf Course, you can expect exceptional service and a well-maintained course thanks to Head Golf Pro, Doug Donner and Superintendent Jesse Rushton.



The Sea Trail Jones Golf Course has great views, generous fairways, along with beautiful lakes, and majestic trees. Opened in 1990, the Jones Course is beloved by both residents and guests, thanks to its exceptional design and captivating setting.

As you make your way through the course, you will be greeted by wide fairways that are mounded and bordered by scenic lakes. These water features not only add to the visual appeal of the course but also come into play on 11 holes, providing an extra challenge for your game. One of the highlights of the Jones Course is its array of pot and large expanse bunkers. Strategically placed throughout the course, these bunkers add an element of challenge and strategy to your round. They require careful consideration and skillful shot-making to navigate successfully. This Par-72 Championship style course is perfect for golfers of all skill levels.

Measuring 6,711 yards from the blue tees, the Jones Course offers a challenge for experienced golfers. The white tees provide a slightly shorter distance of 6,319 yards, while the gold tees measure 5,700 yards. For those seeking a more relaxed round, the red tees offer a distance of 4,946 yards.

The Jones Course features Champions Bermuda greens, which ensure a smooth and consistent putting surface thanks to Superintendent Jesse Rushton. Besides a well-maintained course, you can expect outstanding service from Head Golf Pro Doug Donner and his team who are committed to ensuring that your golfing experience is nothing short of extraordinary.



THE SEA TRAIL

JONES GOLF COURSE

6,711 yards



DINE IN THE BUSTLING STREETS OF SYDNEY AUSTRALIA



Get ready for a culinary journey at Greg Norman's Australian Grille, located in the vibrant Barefoot Landing. Since 1999, this restaurant has been a staple in Myrtle Beach, offering innovative creations, bold flavors, and exotic fare, all with an authentic Australian twist.

Step inside and be transported to the bustling streets of Sydney, where harborside restaurants serve up exquisite dishes. Greg Norman's Australian Grille emulates the upscale and vibrant atmosphere of those fine establishments, providing you with a dining experience that is both sophisticated and family-friendly.

Prepare your taste buds for a treat as our talented chefs craft mouthwatering dishes that showcase the best of Australian cuisine. From succulent grilled seafood to tender prime steaks, each bite is a symphony of flavors that will leave you wanting more. Our commitment to using only the finest ingredients ensures that every dish is a masterpiece.

AWARD WINNING WINE MENU

But it's not just about the food at Greg Norman's Australian Grille; it's also about the experience. Our award-winning wine menu is carefully curated to complement the flavors of our dishes, offering a selection that will please even the most discerning wine connoisseurs. Sip on a perfectly paired glass of wine and let the flavors dance on your palate.

The upscale yet welcoming ambiance of our restaurant adds an extra layer of enjoyment to your dining experience. Whether you're looking to relax after a round of golf, or celebrating a special occasion, or simply enjoying a night out with loved ones, the sophisticated setting of Greg Norman's Australian Grille is the perfect backdrop. Immerse yourself in the warm and inviting atmosphere as you savor each bite.

Located in Barefoot Landing, a premier shopping, dining, and entertainment destination in North Myrtle Beach, Greg Norman's Australian Grille is the perfect place to unwind after a day on the golf course. Sit back, relax, and let our attentive staff take care of you while you relish in the flavors of Australia.

So, if you're looking for a unique and unforgettable dining experience in North Myrtle Beach, look no further than Greg Norman's Australian Grille. Come and experience the innovative creations, bold flavors, and exotic fare that have made us one of Myrtle Beach's most popular restaurants since 1999. We guarantee that you'll leave with a satisfied palate and memories that will last a lifetime.



YOU DON'T HAVE TO
**PLAY LIKE
THE PROS**
TO DINE LIKE
THEM

PRESENT THIS AD FOR
10% OFF
FOOD AND NON-
ALCOHOLIC BEVERAGES

The best of Australia in North Myrtle Beach.

GregNormanAustralianGrille.com / (843) 361-0000

Located in Barefoot Landing

GTRAIL2024

OFFER CANNOT BE COMBINED WITH ANY OTHER DISCOUNT



GREGNORMAN™
— AUSTRALIAN GRILLE —



GREGNORMAN™

LEGENDS GOLF RESORT

HEATHLAND COURSE

The Heathland Course, a part of the renowned Legends Golf Resort Collection in Myrtle Beach, has a distinct design and layout that's a tribute to the traditional links-style courses on the British Isles. Designed by Tom Doak, this par 71 course is a challenge caused by the constant breeze that flows over the course, as well as strategically placed bunkers and lush, deep rough that border the fairways, requiring careful shot selection and precise execution. In addition, the greenside bunkers are deep, adding an extra layer of difficulty and creativity to your game.

The Heathland Course is known for its visual presentation, with most of the holes lacking high vegetation. This allows players to enjoy unobstructed views and a true links-style feel so you get a feel of courses such as St. Andrews, Lahinch, and Cruden Bay, making it a must-play for golf enthusiasts.

The Heathland Course has received numerous accolades over the years, solidifying its reputation as one of the top courses in the world. In 1990, GOLF Magazine named it one of the **Top 10 New Resort Courses** in the World; The Zagat Survey also recognized it as one of **America's Top Golf Courses** in 2003 and 2009. Golf Digest awarded it 4 1/2 stars in both 2007 and 2008, further highlighting its excellence.



Led by General Manager Larry Woodberry, the team at Heathland ensures that every aspect of your golfing experience is top-notch. Head Pro Billy Rowehl is available to provide expert advice and assistance, while Superintendent Mike Bankert ensures that the course is meticulously maintained to the highest standards.

Whether you're a seasoned golfer or a beginner, the Heathland Course welcomes players of all ability levels. Its design allows everyone to *step back in time* and experience the grand traditions of the game.





LEGENDS GOLF RESORT

HERITAGE CLUB

The Heritage Club is a golfing paradise nestled along the stunning Waccamaw River Trail on Pawley's Island, SC.

This is a must-play for all golf enthusiasts. Designed by the renowned Dan Maples, The Heritage Club offers breathtaking landscape, rich history dating back before the Civil War, and exceptional design.

It is a former rice plantation in the 19th Century that is now home to one of the top courses in the region with numerous awards and accolades regionally and nationally.

Ranked among the **Best Public Courses in America** by Golf Digest, the Heritage Club is a par 71 course that follows the natural contours of the land. Stretching alongside long-abandoned rice fields, this course offers a one-of-a-kind layout.

The Heritage Club features spacious, rolling fairways and large, undulating greens, surrounded by lush stands of crepe myrtle, camellias, and azaleas. The meticulously landscaped areas of wildflowers and flowering shrubs add to the beauty of this remarkable setting.

The finishing 18th hole is legendary. A par-5 with water along the fairway before you reach the island green will force you to end your round with some precise shot-making just as you head into the stately clubhouse.





LEGENDS GOLF RESORT

MOORLAND CLUB

The Moorland Course is part of the prestigious Legends collection in Myrtle Beach. It's designed by renowned golf architect P.B. Dye, which is a par 72 with a challenging layout and breathtaking scenery.

The Moorland Course is widely regarded as one of the greatest challenges on the East Coast. Since its opening in 1990, it has garnered attention for its unique design and demanding nature. With large expanses of natural growth, sand, water, and waste areas, the course presents a formidable test for golfers of all skill levels.

The undulating terrain and strategically placed bulkheads add to the course's character, reminiscent of the PGA West Stadium Course. This "target" golf course follows in the tradition of P.B. Dye's designs. It requires precision and strategic shot-making to navigate the challenging layout successfully. Golfers will find themselves rising to incredible heights on the sculpted terrain, encountering deep bunkers, and relying on their skills and a bit of luck.

One of the standout holes on the Moorland Course is the par-4 16th, measuring a challenging 245 yards.



This hole features a large bunker guarding the green, aptly named *Hell's Half Acre*. Playing this hole will truly test your abilities and decision-making skills.

The Moorland Course has been named one of the top courses by Golf Digest and Golf Week numerous times upping its reputation to captivate players with its unique challenges.

Under the guidance of General Manager Larry Woodberry, the Moorland Course ensures that every aspect of your golfing experience is exceptional. Head Pro Billy Rowehl is available to provide expert advice and assistance, while Superintendent Mike Bankert diligently maintains the course to the highest standards.

Prepare yourself for an unforgettable golfing experience at the Moorland Course. With its challenging layout and stunning natural surroundings, this course promises to push you to new heights and test your skills.



LEGENDS GOLF RESORT

OYSTER BAY GOLF LINKS

Oyster Bay Golf Links is a renowned golf course located in Sunset Beach, North Carolina. Designed by architect Dan Maples in 1983, Oyster Bay is known for its unique and challenging layout.

One of the standout features of Oyster Bay is its TifEagle Bermuda grass, which provides a beautiful and well-maintained playing surface. The course offers a total of 18 holes, with the 15th and 16th holes offering incredible views often featured in promotional material.

Throughout its history, Oyster Bay Golf Links has received numerous accolades. In 1983, it was named the Golf Digest & Resort Course of the Year, a prestigious honor that speaks to the quality and appeal of the course. Additionally, in 1990, it was ranked among the top 50 public courses in the country by the same publication.

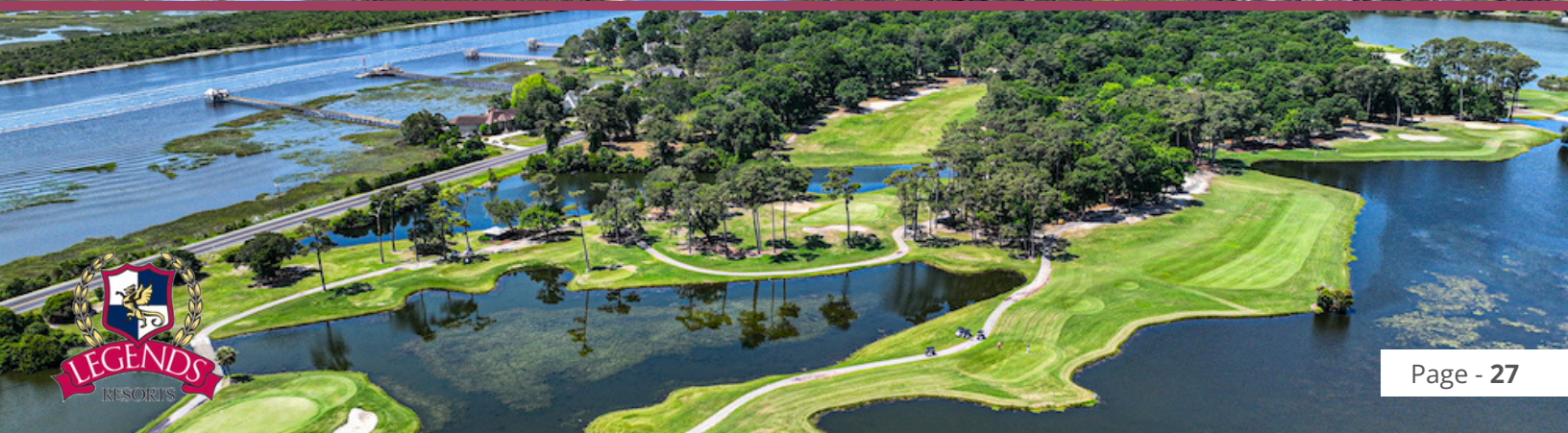
What sets Oyster Bay apart is the blending of different golf philosophies and golf course architecture. The course incorporates elements of penal, heroic, and strategic design, creating a unique and engaging golfing experience. Players will encounter a variety of challenges, including marsh-oriented holes, two island green par threes, strategically placed freshwater lakes, and a mix of long and short holes.

This combination ensures that players must showcase their shot-making abilities and strategic thinking to navigate the course successfully.



Measuring just under 6,700 yards, Oyster Bay is a par-70 course. However, the length is not the only factor that makes it a demanding test of skill. The course features cavernous bunkers that can swallow errant shots, undulating greens that require precision putting, and lengthy par 4 holes that demand both distance and accuracy.

The current General Manager and Head Pro at Oyster Bay is Tim Jackson, with Josh Schumacher also serving as a key member of the staff. Together with their staff, they've made Oyster Bay Golf Links a must-visit destination for seasoned golfer looking to test your abilities or a casual player looking for a unique experience. Oyster Bay will leave a lasting impression





LEGENDS GOLF RESORT

PARKLAND COURSE

The Parkland Course is another gem of the Legends Golf Resort collection in Myrtle Beach. Designed by Larry Young, this stunning course offers a unique and exciting golfing experience. Get ready to immerse yourself in the beauty of the natural terrain and test your skills on this challenging par 72 course. It's called The Tree-Lined Challenge.



The Parkland Course will take you to different experiences. It showcases the diversity and beauty of the natural terrain with its contoured, tree-lined fairways, vast natural areas, deep-faced bunkers, and massive, multi-level greens. The course design is reminiscent of the styles of legendary architects Alister MacKenzie with Augusta National and George Thomas, who designed Riviera Country Club.

Playing the Parkland Course requires a deft touch off the tee and on the approach. The fairway and green-side bunkering present a challenge that demands strategic shot placement and careful decision-making. From tee to green, you will need to employ a thoughtful strategy to navigate this par 72 playing field successfully.



The Parkland Course has received numerous accolades, solidifying its status as one of the top courses in the area. Golf Digest has consistently recognized it as one of the **Best Places to Play** in 2009 and 2007. It received 4-star ratings, while in 2005 and 2003, it earned 4 1/2 stars and outstanding service awards. Additionally, it received 4-star ratings in 2001 and 1999.

Under the leadership of General Manager Larry Woodberry, the team at Parkland ensures that every aspect of your golfing experience is exceptional. Head Pro Billy Rowehl is available to provide expert advice and assistance, while Superintendent Mike Bankert meticulously maintains the course to the highest standards.

THOROUGHBREDS CHOPHOUSE, WHERE GOLFERS GO FOR A GREAT STEAK

What sets Thoroughbreds apart for golfers, you ask? Imagine a post-golf haven where you can trade stories of birdies and bogeys over the finest steaks and seafood in Myrtle Beach. The restaurant's recently updated foyer welcomes you with the soft glow of a beautiful chandelier and rare equine oil paintings, creating an ambiance that seamlessly marries sophistication with a touch of the equestrian.

As golfers step inside, they are greeted by a modern martini menu that showcases premium spirits from across the globe, offering the perfect libation to celebrate victory on the greens. Thoroughbreds' commitment to excellence extends beyond its aesthetic enhancements; state-of-the-art kitchen equipment ensures that the culinary team has the best tools of the trade to craft delectable dishes.

Thoroughbreds Chophouse & Seafood Grille isn't just a restaurant; it's a haven where golfers come to savor the victory of a well-played game over the finest steaks in Myrtle Beach. So, whether you've conquered the fairways or just want to revel in the spirit of golfing camaraderie, Thoroughbreds invites you to indulge in an unparalleled dining experience that perfectly complements your love for the game.





THOROUGHBREDS CHOPHOUSE

(843) 497-2636

9706 N Kings Hwy, Myrtle Beach, SC 29572

thoroughbredsrestaurant.com





SHAFTESBURY GLEN GOLF & FISH CLUB

Shaftesbury Glen Golf & Fish Club is a must-visit destination for golf enthusiasts seeking a memorable and challenging round. Designed by renowned architect Clyde Johnson and opened in 2001, Shaftesbury Glen Golf & Fish Club offers a unique and picturesque golfing experience. Located in quaint Conway, South Carolina, the course showcases Johnson's expertise in blending the natural elements seamlessly into the course layout.

With meticulously designed fairways, strategically placed bunkers, and stunning water features, Shaftesbury Glen is a visual delight from start to finish. The signature hole at Shaftesbury Glen is the captivating Hole 2. This par-4 hole is as scenic as it is challenging. With a length that stretches your skills, Hole 2 demands precision and strategy from tee to green. Golfers will encounter a fairway guarded by water on the left and a strategically placed bunker on the right. The approach shot requires accuracy to navigate around a large lake that surrounds the green. It's a hole that will test your shot making abilities while immersing you in the natural beauty of the course.

Shaftesbury Glen boasts Sunday Bermuda greens, known for their smooth and consistent roll. Golfers can expect a true putting surface throughout their round, ensuring an enjoyable and rewarding experience on the greens. Under the guidance of General Manager, Ryan McCarty and Superintendent, David Kingsland, Shaftesbury Glen is meticulously maintained to the highest standards. Golfers consistently praise the course's well-manicured fairways, pristine greens, and overall attention to detail. Shaftesbury Glen Golf & Fish Club offers more than just exceptional golf. After your round, relax and unwind in the full dining area, where you can enjoy a delicious meal and refreshing beverages.

The clubhouse provides a welcoming atmosphere, and the staff is always ready to assist with any needs you may have. With Head Pros Ryan Wilkinson and Rick Hurst leading the golf operations, Shaftesbury Glen is committed to providing a top-notch experience for all golfers. Whether you're a seasoned player or a beginner, the knowledgeable and friendly staff will ensure your visit is nothing short of exceptional.



The Pearl Golf Links, in Calabash, North Carolina, is a must-visit destination for all golf enthusiasts. With its exceptional design, beautiful surroundings, and top-notch facilities, The Pearl Golf Links offers an unforgettable golfing experience.

The course itself is a masterpiece created by renowned golf course designer Dan Maples. With 27 holes to choose from, you'll have a variety of options to challenge your skills and have a great time. The course is divided into three sets of nine holes, each with its own unique characteristics and challenges.

As you make your way through the course, you'll notice that the West to East 18 holes offer a special treat. Three of these holes are situated along the Calabash River, providing breathtaking views and a serene atmosphere. The combination of challenging golf and stunning natural surroundings makes these holes a favorite among golfers.

Another standout feature of The Pearl Golf Links is its TiffEagle Greens. These greens are meticulously maintained by Superintendent Jeremy Chambley to provide a smooth and consistent playing surface. With their lush green color and precise putting lines, these greens will undoubtedly enhance your golfing experience.

General Manager Trey Ernstes ensures that every visitor receives exceptional service and assistance. Whether you are a seasoned golfer or a beginner, Trey and his team are dedicated to making your time here enjoyable and memorable.

The Pearl Golf Clubhouse features a pro shop where you can find the latest golf equipment and apparel. Additionally, you can relax and unwind at the course's restaurant, which offers delicious meals and refreshing beverages.

TRAIL GUIDE

THE PEARL GOLF LINKS

1300 Pearl Blvd.
Calabash,
North Carolina 28467



THE PEARL
GOLF LINKS

WACHESAW EAST GOLF CLUB

Nestled amid a former rice plantation in Murrells Inlet, Wachesaw East has reaped the awards you'd anticipate from a former LPGA event site. Once the home of the Kathy Ireland/Greens Competition Classic, Wachesaw East was named the 2007 Myrtle Beach Golf Course of the Year by the Myrtle Beach Golf Course Owners Association. It has also recently received honors for its fair and challenging layout, as well as its exceptional course conditions.

Designed by renowned architect Clyde Johnston, Wachesaw East offers a golfing experience that is both enjoyable and memorable. The course opened in 1996 and has since become a favorite among locals and visitors alike.

Featuring TifEagle Bermuda greens, Wachesaw East provides golfers with smooth and consistent putting surfaces. The greens are meticulously maintained by Superintendent Jeff Reeder, ensuring that they are always in top-notch condition.

One of the standout holes at Wachesaw East is the signature Hole #18. This par 4 measures 400 yards from the white tees and offers a challenge for golfers of all skill levels. Water guards the entire left side of the hole, while trees line the right side, requiring accuracy off the tee. The elevated green adds an extra element of difficulty, as the second shot often plays longer. Bunkers strategically placed on the left side and behind the green further test golfers' skills. Hole #18 is not only challenging but also boasts breathtaking views, making it a beautiful finishing hole.

After a round of golf, players can unwind and indulge in the amenities offered at Wachesaw East. The Toasted Tee, the on-site snack bar and restaurant, provides a full breakfast and lunch menu. In addition to delicious food, guests can enjoy a wide variety of beverage options.



The restaurant also features an outside bar and a large patio with pergolas and a fountain. From this vantage point, guests can relax with a drink or cigar while overlooking Hole #10 and the expansive driving range.

Wachesaw East has gained recognition not only for its exceptional golf course but also for its overall experience. With its picturesque setting and well-maintained facilities, it is no wonder that this course has received numerous accolades.

Whether you are a seasoned golfer or a beginner, Wachesaw East offers a golfing experience that is sure to impress. Book your tee time today and discover why this course is a favorite among golf enthusiasts in the Murrells Inlet area.



WELLMAN GOLF CLUB

Wellman Golf Club is a hidden gem in nearby Johnsonville, South Carolina. With a rich history dating back to its opening in 1966, this classic course has recently undergone a rejuvenation and is ready to provide golfers with an unforgettable experience.

As of its grand reopening on June 1, 2023, Wellman Golf Club is under the expert management of General Manager and PGA professional Harold Perry. With his wealth of knowledge and passion for the game, Perry ensures that every aspect of the golfing experience is of the highest quality.

Designed by renowned architect Reese Jones, Wellman Golf Club boasts a par 72 layout that offers a variety of challenges and rewards for players of all skill levels. With five sets of tees, golfers can choose the perfect distance to suit their game, making it an inclusive destination for golfers of any ability.



Once you step onto the course, you'll immediately sense a Pinehurst vibe, with meticulously maintained fairways that play fast and greens that are firm. The speed of the greens at Wellman Golf Club is currently running at an impressive 9.6 on the Stimpmeter, ensuring that your putting skills will be put to the test.

After an exhilarating round, you can relax and refuel at the snack bar, which offers a range of delicious options to satisfy your post-golf cravings. Whether you're in the mood for a quick snack or a hearty meal, the snack bar at Wellman Golf Club has you covered.

With its recent reopening, Wellman Golf Club is ready to welcome both local golf enthusiasts and visitors to Myrtle Beach seeking a unique golfing experience. The combination of its rich history, meticulous course conditions, and the expertise of Harold Perry as the GM/PGA professional make it a must-visit destination for any avid golfer.

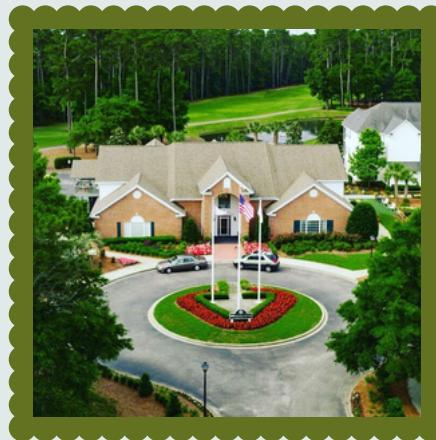
CLUBHOUSE FEVER



SHAFTESBURY GLEN



WACHESAW EAST



PRESTWICK



THE PEARL



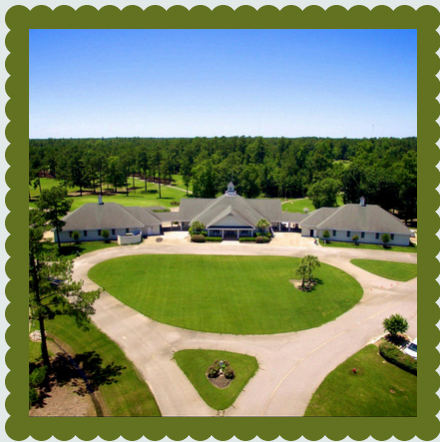
ARCADIAN SHORES



BLACKMOOR GOLF CLUB



CROW CREEK



CROWN PARK



DIAMONDBACK



GLEN DORNOCH



INTERNATIONAL CLUB



LOCKWOOD FOLLY



MEADOWLANDS





RIVER OAKS



RIVER'S EDGE



SEA TRAIL



SANDPIPER BAY



RIVERS EDGE

TRAIL GUIDE

BOARDWALK BILLYS

North Myrtle Beach, SC

Experience Golf and Great Food at Boardwalk Billy's in North Myrtle Beach!

Nestled along the Intracoastal Waterway, Boardwalk Billy's has been serving up delicious food and providing a memorable dining experience since 2013. Whether you're a golf enthusiast looking for a place to unwind after a round or a family seeking a casual and enjoyable meal, Boardwalk Billy's is the perfect destination for you.

Located on the Doc Holidays Marina, Boardwalk Billy's offers a breathtaking view. Imagine sitting on our spacious deck, sipping on a refreshing cocktail, and watching the boats cruise by as the sun sets over the water. It's a picture-perfect setting that sets the stage for an unforgettable dining experience.

Step inside and you'll find a cozy dining room that exudes warmth and comfort. Our friendly staff will welcome you with open arms, making you feel right at home. Whether you're celebrating a special occasion or simply enjoying a night out with loved ones, our relaxed atmosphere is the ideal backdrop for creating lasting memories.

But Boardwalk Billy's is not just about ambiance; it's also about exceptional food. Our menu is designed to satisfy even the most discerning palates. From mouthwatering seafood dishes to juicy burgers and tender steaks, there's something for everyone. Our chefs take pride in using only the freshest ingredients, ensuring that each bite is bursting with flavor.





And let's not forget about our daily happy hour food and drink specials! Whether you're looking for a refreshing cocktail, a cold beer, or a delicious appetizer to share, our happy hour is the perfect time to indulge without breaking the bank. Sit back, relax, and enjoy the company of friends and family while taking advantage of our unbeatable deals.

And you and your friends will want to stick around and catch dozens of televised games and golf tournaments thanks to Boardwalk Billy's 27 televisions.

But the fun doesn't stop there. Boardwalk Billy's also offers live entertainment, adding an extra touch of excitement to your dining experience. From talented local musicians to lively bands, there's always something happening at Boardwalk Billy's. So, sit back, enjoy the music, and let the good times roll.

If you're planning a golf getaway to North Myrtle Beach, make sure to include Boardwalk Billy's in your itinerary. After a long day on the greens, unwind and indulge in our delectable dishes, refreshing drinks, and captivating views. We guarantee that you won't be disappointed.

So, what are you waiting for? Come and experience golf and great food at Boardwalk Billy's in North Myrtle Beach. We can't wait to welcome you and create a memorable dining experience you'll want to relive again and again.





**BERKSHIRE
HATHAWAY**
HOMESERVICES

COASTAL REAL ESTATE

**FIND YOUR
NEW HOME
TODAY**

**DISCOVER THE
COASTAL
LIFESTYLE
YOU'VE
ALWAYS
DREAMED OF!**



**PROPERTIES
FOR SALE**



CHERYL MOSSER

(843)-907-0019

bhhscoastal.com

cheryl@bhhscoastal.com

1232 Farrow Parkway, Myrtle Beach



WEDGEFIELD COUNTRY CLUB



Golf with Us


Discover the charm of Wedgefield Country Club in historic Georgetown, SC. Experience a rich history dating back to pre-Revolutionary War times, with remnants of ballast brick fencing from ships that once sailed into the thriving port. Majestic live oak trees provide shade and serenity, adding to the timeless beauty of the landscape.

Designed by renowned architects Porter Gibson and Bob Toski, the golf course seamlessly blends natural contours with strategic challenges. Navigate through rolling fairways, hazards, and manicured greens for an unforgettable golfing experience.

Enjoy the clubhouse's well-equipped pro shop and the Brick House Pub's delicious offerings. With its historical significance, natural splendor, and exceptional facilities, Wedgefield Country Club offers a unique escape for history and golf enthusiasts alike.

Book Now

Page - 41

 Book Now
(843) 546-8587

wedgefieldcountryclub.com

 129 Clubhouse
Ln, Georgetown,
SC 29440



Serving the local community for over 40 years

Our Services



Life Insurance

Secure your family's financial future with life insurance



Health Insurance

Ensure access to quality healthcare for yourself or your employees



Auto Insurance

Drive confidently, protected from any accidents and theft



Home Insurance

Safeguarding your home and belongings with comprehensive protection.



Like a good neighbor, State Farm is there.

State Farm is a leading provider of comprehensive insurance solutions for individuals, businesses, and organizations.

- ✓ Customized Coverage
- ✓ Financial Stability
- ✓ Dedicated Agents
- ✓ Competitive Rates

Contact Us



843-249-7066

37 CHANNELS / 678 GOLF PROGRAMS
GOLF CONTENT BY WINGDING MEDIA™

the **GolfDirector**

TGD NEWSWIRE

THE ULTIMATE RESOURCE FOR GOLFERS!



**✕ LOOKING FOR MORE GREAT GOLF INDUSTRY
NEWS, VIDEOS, AND UPDATES? SUBSCRIBE NOW**



thegolfdirector.com



(843) 272-1901



**"GOLF IS DECEPTIVELY SIMPLE AND
ENDLESSLY COMPLICATED; IT SATISFIES
THE SOUL AND FRUSTRATES THE
INTELLECT. IT IS AT THE SAME TIME
REWARDING AND MADDENING - AND IT IS
WITHOUT A DOUBT THE GREATEST GAME
MANKIND HAS EVER INVENTED."**

ARNOLD PALMER